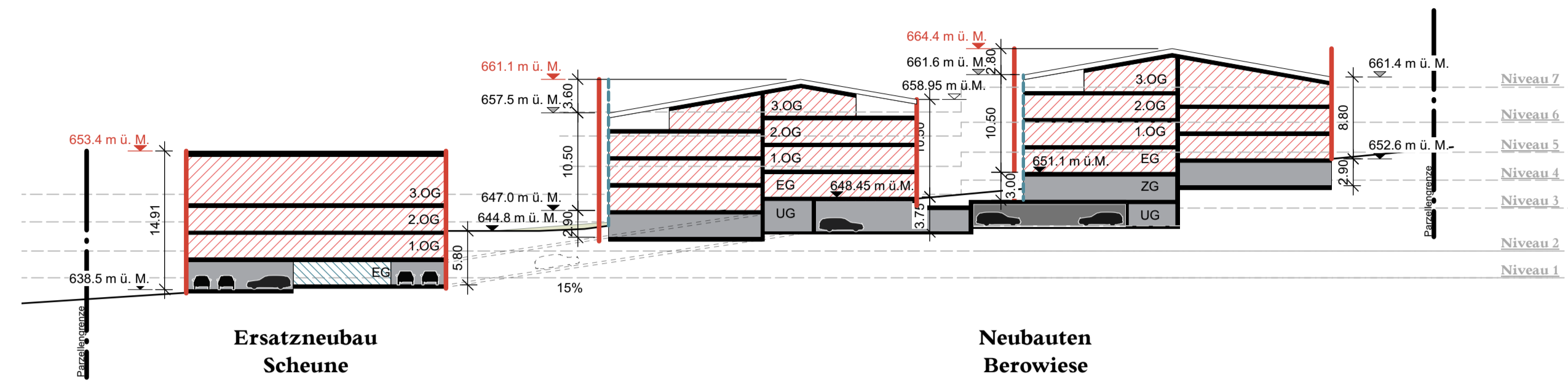
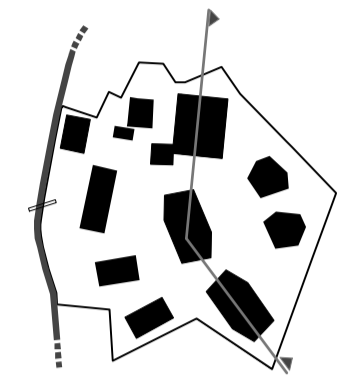
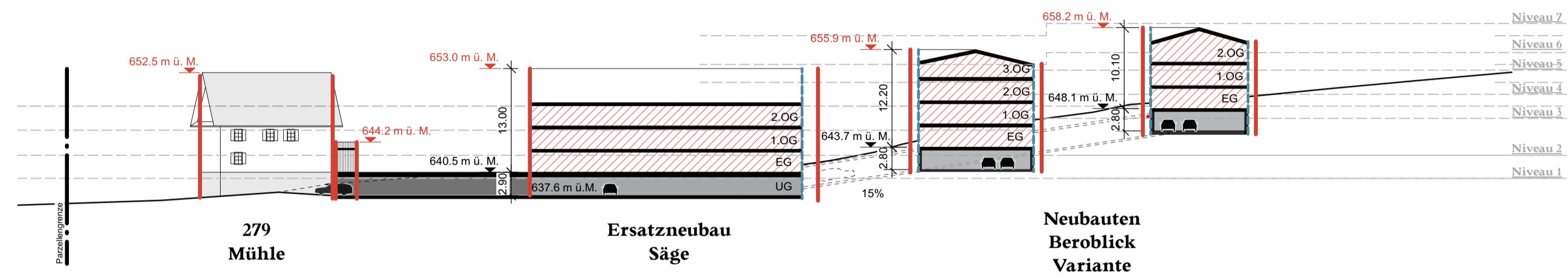
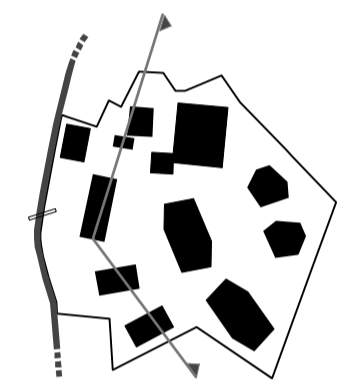


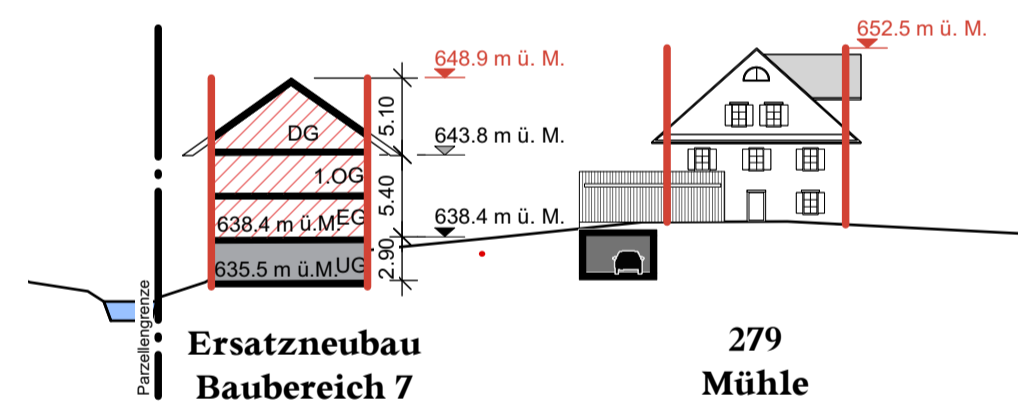
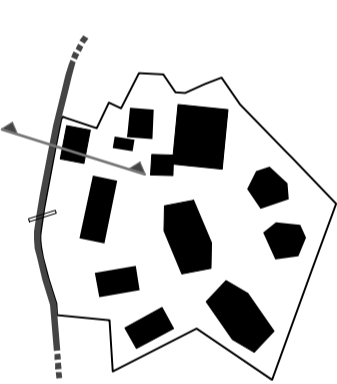
Schnitt A-A'



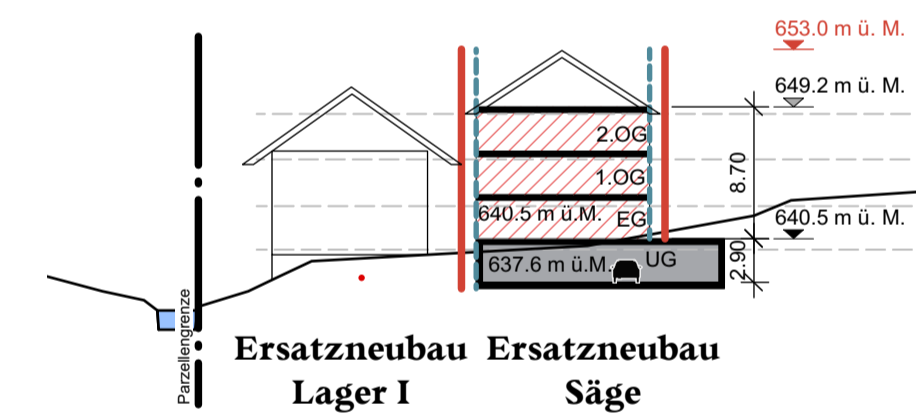
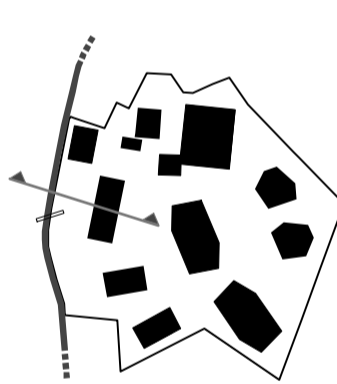
Schnitt B-B'



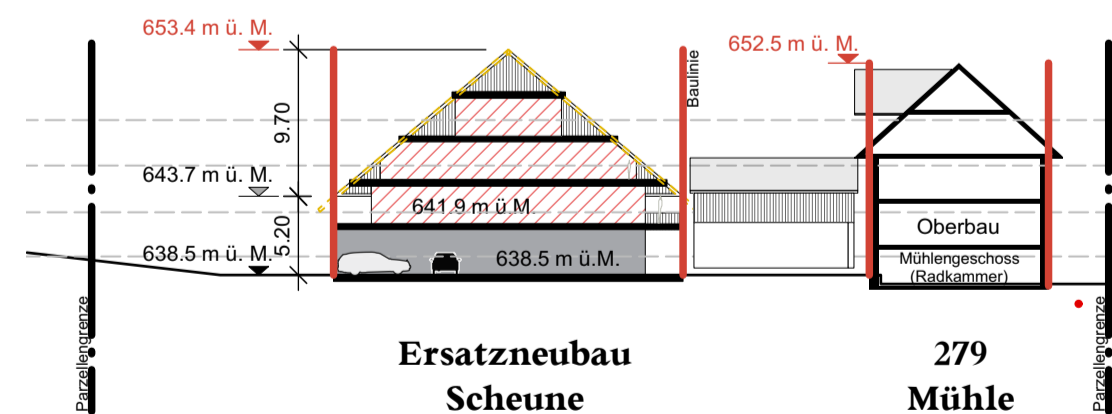
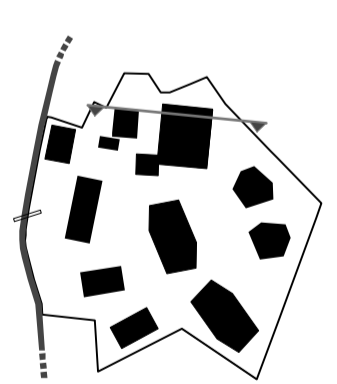
Schnitt C-C'



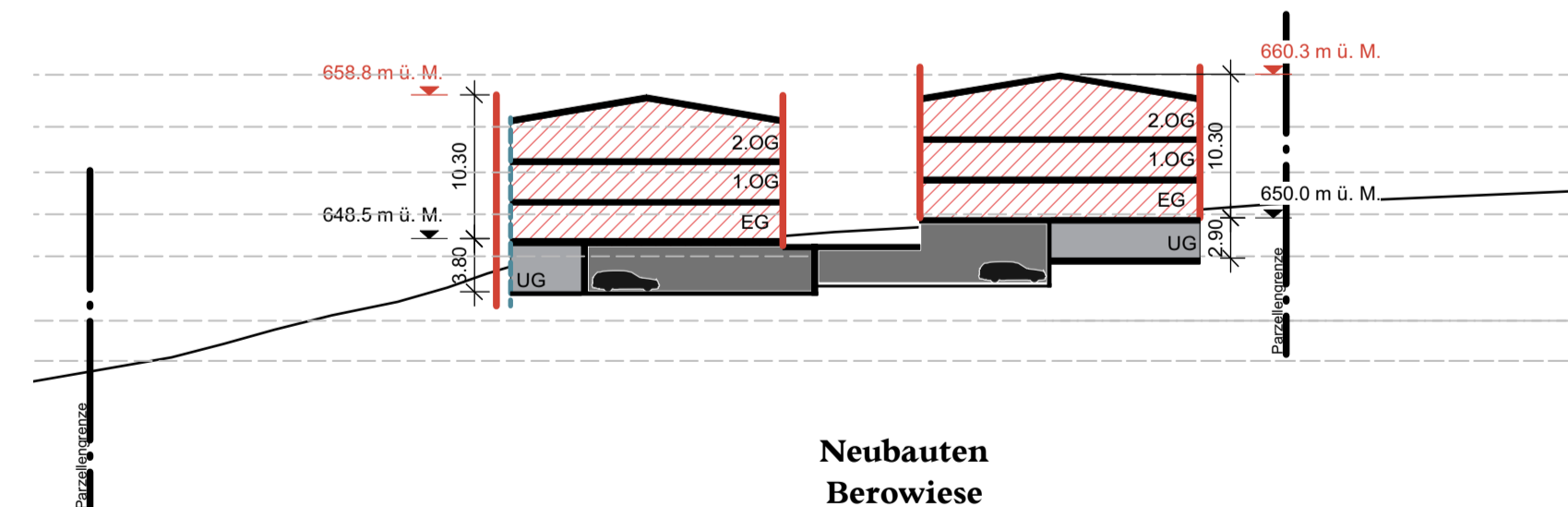
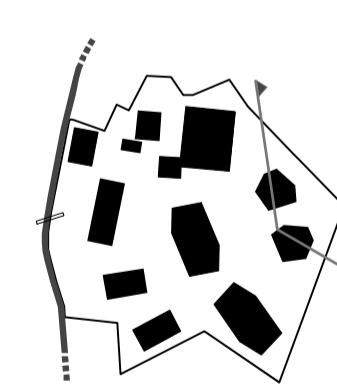
Schnitt D-D'



Schnitt E-E'



Schnitt F-F'



Planlegende

Verbindlicher Inhalt

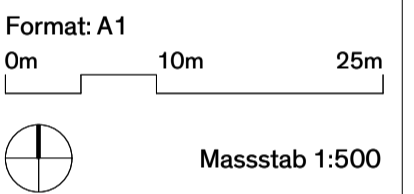
- Projektion Baubereich
- ▼ Firsthöhe in m ü. M.
- ▼ Fassadenhöhe in m ü. M.

Verbindlicher Inhalt

- ▼ EG-Kote in m ü. M.

Orientierender Inhalt

- bestehendes Terrain
- Wohnungen
- Gemeinschaftsräume
- Parken und Technikräume
- Gebäude gemäss Richtprojekt
- Abwasserleitung



Gestaltungsplan Hinder Müli

Grundstücke GB Nr. 163, 377, 380

Schnittplan 1:500

Entwurf vom 09.06.2017

Dost
Stadtentwicklung
Luzern

Architekt:
Dost Stadtentwicklung
Neustadtstrasse 7
CH-6003 Luzern

iR

Raumplaner:
Hansueli Remund Raumplanung
Neustadtstrasse 7
CH-6003 Luzern

BÖSCH
LANDSCHAFTS
ARCHITEKTUR

Landschaftsarchitekt:
Bösch Landschaftsarchitektur
Mühlentelstrasse 185
CH-5200 Schaffhausen